

P.O. Box 126260, Al Barsha South, Dubai, United Arab Emirates  
Tel: +971 4 373 6373, Fax: +971 4 323 3176  
Info\_gwa@gemsedu.com www.gemsworldacademy-dubai.com

CEEB CODE: 697067  
UCAS: 46011  
IB: 004438

## Mission Statement

GEMS World Academy-Dubai develops inquiring, reflective and caring learners who, through the rigour of the IB programmes, have the knowledge, skills and character to take action and create a better, more peaceful world. Supported by highly qualified staff in world-class facilities, our diverse international community is encouraged to develop intercultural understanding and respect.

## Vision Statement

Our aim is to be a world-class IB school that maximizes every student's learning and character to enable them to choose their own successful path and positively contribute to the local and global society.

## The School Community

GEMS World Academy-Dubai (GWA) is a Pre-K to Grade 12 co-educational IB continuum day school. Established in 2008 as a member of the GEMS Education network of schools, GWA currently hosts nearly 1500 students from more than 85 nationalities. We view our multicultural community as a source of learning as we develop an understanding of what makes people different, while celebrating our similarities. GWA offers a 21<sup>st</sup> century learning environment where every student participates as an active learner. Students have access to a broad range of learning experiences facilitated by a multicultural and multilingual international staff of educators in a world-class school facility. The IB Learner Profile and GEMS Core Values shape our character expectations as we aim to develop international mindedness in all members of our community, students, staff and parents alike.

## Accreditation

GWA is authorized by the IB to offer three IB Programmes - the Primary Years Programme, Middle Years Programme and Diploma Programme - to students aged 3 - 18. GWA is also accredited by the Council of International Schools (CIS) and is in the process of NEASC accreditation.



Graduating Class of 2019

## Head of School

Mr. Stuart Walker  
s.walker\_gwa@gemsedu.com

## Secondary School Principal Deputy Head of School (K-12)

Mr. Giles Pruett  
g.pruett\_gwa@gemsedu.com

## Director of Teaching and Learning (PreK-12)

Ms. Megan La Caze  
m.lacaze\_gwa@gemsedu.com

## Assistant Principals

Mr. Christopher Burch  
c.burch\_gwa@gemsedu.com

Mr. Ivan Rigney  
i.rigney\_gwa@gemsedu.com

## Head of Senior School

Ms. Rania Hussein  
r.hussein\_gwa@gemsedu.com

## Deputy Head of Senior School

Ms. Alexandra Fatu  
a.fatu\_gwa@gemsedu.com

## IB MYP Coordinator

Mr. Jonathon Howarth  
j.howarth\_gwa@gemsedu.com

## Senior School Counselors

Ms. Angela Blackmer  
a.blackmer\_gwa@gemsedu.com

Ms. Magdalena Kozłowska  
m.kozłowska\_gwa@gemsedu.com

## Senior School / Counseling Secretary

Ms. Arlene Samia  
a.samia\_gwa@gemsedu.com

### The Curriculum

As a private, co-educational day school, we offer three International Baccalaureate (IB) programmes: the Primary Years Programme (PYP), Middle Years Programme (MYP) and Diploma Programme (DP). Following the UAE's educational guidelines, all students must take Arabic until the end of Grade 9, while students who are citizens of Arabic speaking countries are required to study Arabic until graduation. Muslim students study Islamic Education as part of their academic schedule through the end of Grade 12. The language of instruction at the school is English. Students in Grades 9-12 follow a university preparatory programme culminating in the IB's Full Diploma, or Diploma Courses (Certificate) Programme in addition to the accredited GWA High School Diploma.

**The Middle Years Programme (MYP):** a rigorous and innovative five-year programme for students aged 11-16 (Grades 6-10 at GWA). Students take one subject from each of the following eight areas every year:

1. Arts
2. Design
3. Health & Physical Education
4. Individuals and Societies
5. Language and Literature
6. Language Acquisition
7. Mathematics
8. Science

The MYP helps every child see their studies through a global lens to personalize learning. This allows for IB trained teachers to strike the balance between developing 21st century skills while also mastering curriculum content. Students learn how to conceptualize their understanding and think critically about the value of the content, how the content is presented and why they are engaged in every learning activity.

During Grades 9 and 10, students at GWA complete a Personal Project. Through this culminating exercise, our students will demonstrate the knowledge they have gained and what skills they have acquired in a powerful and personal project that includes a written component, a final product and a reflection on their work.

Also, throughout their journey in the MYP, GWA students will have the opportunities to take part in a robust and meaningful Service in Action programme. This adds to the value of an already creative and rigorous curriculum to bring out the best in your child and help them to be active members of their communities, both in and out of school.



### High School Diploma Requirements

GWA High School Diploma students must study six Standard level subjects and complete all Creativity, Activity & Service requirements. They must also achieve a passing grade of '3' or higher in all their subjects.

To be awarded a GWA High School Diploma as a Courses or DP student, candidates must score 3 or higher in his/her DP courses. For Diploma candidates, they must also obtain a 'D' or higher in Theory of Knowledge and the Extended Essay (EE)/Research Paper (RP) and complete all Creativity, Activity & Service requirements.

### The IB Diploma Programme (DP)

The DP is a demanding university preparatory programme that leads to external exams. It is designed for highly motivated students in their final two years of school. The DP curriculum emphasizes critical thinking, intercultural understanding, research skills and community service. Approximately 80% of GWA students in Grades 11 and 12 are enrolled in the full DP, with the remainder enrolled in Diploma Courses or the High school Diploma route.

The IB Diploma will be awarded to a candidate provided all the following requirements have been met: all CAS requirements, the candidate's total points are 24 or more, there is no grade E awarded for Theory of Knowledge and/or the Extended Essay, there is no grade 1 awarded in a subject/level, there are no more than two grade 2's awarded (HL or SL), there are no more than three grade 3's or below awarded (HL or SL), the candidate has gained 12 points or more in HL subjects, and the candidate has gained 9 points or more on SL subjects.

### Courses Programme

The Courses Programme is an alternative pathway to the DP. Courses students complete 6 subjects at the SL and sit IB World Exams in May. Courses students must fulfill all of their SL courses requirements, and complete a modified CAS portfolio requirement. DP Courses candidates receive a transcript of results issued by the IB.

### Evaluation Scheme

GWA conforms to the IB system with grades ranging from 7 (high) to 1 (low), with the exception of TOK and EE which is reported A (high) to E (low). The system is used for all internal and external assessments and on official transcripts.

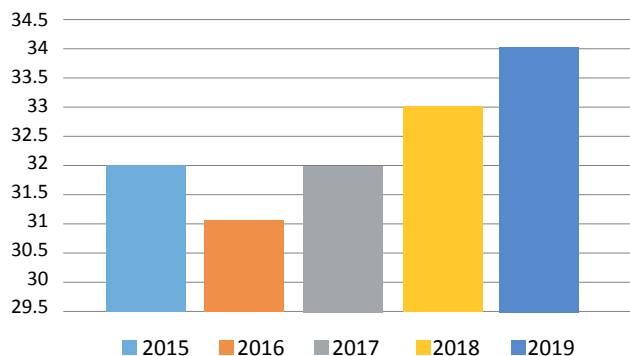
A detailed description of Grade Descriptors is located here: <http://www.ibo.org/globalassets/publications/recognition/dp-grade-descriptors-en.pdf>

GWA only provides end of year grades on High School transcripts. Should a mid-year transcript be required for Grade 12 students, it should be noted that the grades are only preliminary and an updated transcript with final grades will be provided at the end of Grade 12.

The Diploma Programme at GWA has minimum entrance requirements for Grade 10 students, details of which are available on the school website. Students who do not qualify for the Full DP can enroll in the Diploma Courses.

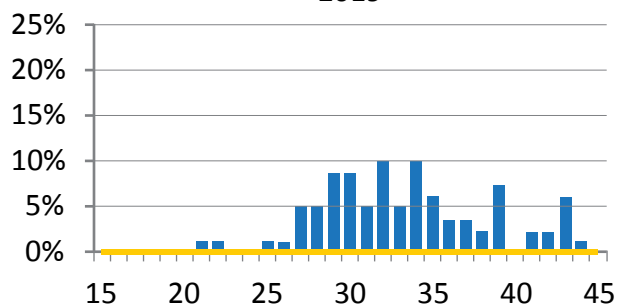
## Diploma Scores

### Average Candidate Diploma Score

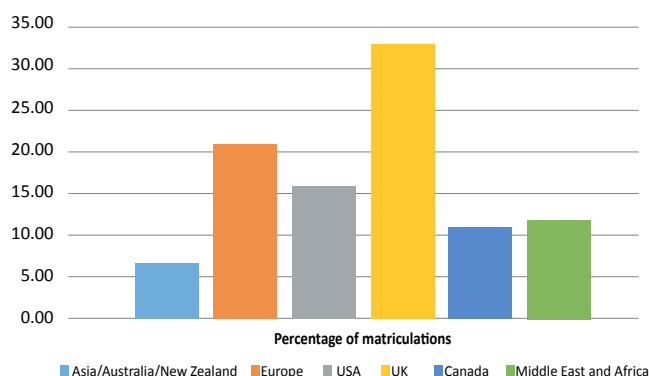


## Diploma Score Distributions by Year

2019



## University Destinations 2014-2019



## Class Rank and Grade Point Average

- We do not report class rank due to the mobility of our students and the diversity of their educational backgrounds.
- We do not report a GPA, but do provide a suggested equivalency scale below:

GWA Grade	Achievement Descriptor	Suggested Equivalent Letter Grade	Suggested GPA Calculation
7	Exceptional	A+	4.00
6	Superior	A/A-	4.00
5	Very Good	B+/B/B-	3.50
4	Satisfactory	C+/C	3.00
3	Mediocre	C-	2.00
2	Poor	E	0.00
1	Very Poor	F	0.00

## GWA 2019 IB Diploma Programme Results

Total students registered	Full Diploma candidates	Diploma Courses & Career-related Programme candidates	Number of candidates who successfully passed the Diploma
111	79	31	76
Percentage of candidates who achieved the Diploma	Average points obtained by candidates who achieved the Diploma	Highest Diploma points awarded to a candidate	Average grade obtained by candidates who achieved the Diploma
97%	34	44	5.44



Asia	Europe	United Kingdom	USA
American University of Armenia	Aarhus University	Anglia Ruskin University	American University
Hong Kong University of Science & Technology	American University Paris	Aberystwyth University	Arizona State University
Istanbul Bilgi University - Turkey	Amsterdam University College	Arden University	Babson College
Koc University - Turkey	Arnheley Art Academy	Birkbeck University of London	Beacon College
Korea University	Artevelde University College	Brunel University	Berkely University
Kyung Hee University - S. Korea	BI Norwegian Business School	Canterbury College	Berklee College of Music
Les Roches Intl School Hotel Mgmt Shanghai	Business and Hotel Management School	Cardiff University	Bowling Green State University
Nanyang Technological University	Copenhagen Business School	Cardiff Metropolitan University	Cal. State University, East Bay
New York University Shanghai	Danish Technical University	CASS Business School, City U. London	Cal. State University, Fullerton
Ritsumeikan Asia Pacific University	Dublin City University	Central Saint Martins	Colorado School of Mines
Taylor's University - Malaysia	École hôtelière de Lausanne	City University London	Columbia University
University of Nottingham, Malaysia	Ecole Polytechnique Federale de Lausanne	Coventry University	Cornell University
University of Tsukuba - Japan	Erasmus University College	Durham University	Eugene Lang College
Webster University Thailand	Erasmus University Rotterdam	Edinburgh Napier University	Florida Intl University
Middle East & Africa	ESADE Barcelona	Heriot-Watt University	Gardner Webb University
Al Akhawayn University - Morocco	Esmod Paris	Hult Intl Business School	Georgetown University
American University in Dubai	EU Business School Geneva	Imperial College London	George Washington University
American University of Sharjah	EU Business School Munich	King's College London	Hult Intl Business School, San Francisco
Ajman U. of Science and Technology	European University	Kingston University	Humber College
Canadian University Dubai	Free University of Bozen	Lancaster University	Indiana University Bloomington
Dubai Institute of Design and Innovation (DIDI)	Glion Institute of Higher Education	Leeds Metropolitan University	Loyola University Maryland
Emirates Academy of Hospitality Management	Global Business School of Barcelona	London School of Economics & Poli. Sci.	Maryland Institute College of Art
Emirates Aviation University	Hanze University of Applied Sciences	Loughborough University	Marymount California University
Gulf Medical University	Hotelschool The Hague	Oxford Brookes University	Mohawk Valley Community College
Heriot-Watt University, Dubai	HULT International Business School	Plymouth College of Art	Mount Holyoke College
Middlesex University Dubai	IE University - Spain	Queen Mary University of London	S.I. Newhouse School of Public Communication
Murdoch University Dubai	Istituto Marangoni	Ravensbourne College of Design	New York University
New York University Abu Dhabi	Istituto Europeo di Design Turin	Regent's University London	Northeastern University
Riara University	Jonkoping Intl Business School	Royal Holloway, University of London	Northern Illinois University
Synergy University Dubai	KU Leuven	Sheffield Hallam University	Otis College of Art and Design
The Draughting Academy - S. Africa	Linnaeus University-Sweden	Solent University	Parsons School of Design
University of Birmingham-Dubai	Leiden University	Suffolk University	Pennsylvania State University
University of Cape Town - S. Africa	Les Roches Intl School of Hotel Mgmt	Swansea College of Arts	Plymouth College of Art
University of Pretoria - S. Africa	National University of Ireland, Galway (Medicine)	The Robert Gordon University	Purdue University
University of Wollongong, Dubai	Norwegian School of Econ. & Bus. Adm.	University of Aberdeen	Rhode Island School of Design
Canada	Parsons Paris - The New School	University of Bath	Rice University
British Columbia Institute of Technology	Richard Wagner Conservatory of Music in Vienna	University of Birmingham	Ringling College of Art & Design
Carleton University	Rønningen folkehøgskole	University of Brighton	Rochester University
Concordia University	Rotterdam School of Management, Erasmus University	University of Bristol	Rollins College
Corpus Christi College	SAE Institute - Stuttgart	University of Buckingham	Rose-Hulman Int. of Technology
Dalhousie University	Stockholm University	University of Cambridge	Stony Brook University
McGill University	Szkoła Główna Handlowa	University College London	Suffolk University
McMaster University	Talinn Tech-Estonia- Europe	University of Edinburgh	SUNY - Plattsburgh
Mount Saint Vincent University	Technical University Vienna	University of Exeter	SUNY College at Geneseo
Rutgers University	TU Eindhoven	University of Hertfordshire	Syracuse University
Ryerson University	The American University of Paris	University of Huddersfield	The University of Tampa
Seneca College of Applied Arts & Technology	The Hague University of Applied Sciences	University of Kent	University at Buffalo
University of Alberta	Trinity College Dublin - Ireland	University of Leeds	United States Coast Guard Academy
University of British Columbia	TU Delft	University of Leicester	University of California-Berkeley
Université de Montréal	University of Applied Sciences - Amsterdam	University of Manchester	University of California-Davis
University of Toronto	Universita Bocconi	University of Newcastle	University of California-Irvine
University of Waterloo	University College Maastricht	University of Northampton	University of California-Los Angeles
University of Winnipeg	University of Amsterdam	University of Nottingham	University of California-Riverside
Wilfrid Laurier University	University of Copenhagen	University of Oxford	University of California-San Diego
York University	University of Debrecen	University of Portsmouth	University of Colorado-Boulder
AUSTRALIA/NEW ZEALAND	University of Groningen	University of Reading	University of Massachusetts
Australian National University	University of Latvia	University of Sheffield	University of Rochester
Monash University	ULB (Solvay Business school of Management-Belgium)	University of Southampton	University of Pennsylvania
Murdoch University	University of Southern Denmark	University of Surrey	University of San Francisco
University of Auckland	Universite Toulouse	University of Sussex	University of Southern California
University of Melbourne	University of Twente	University of the Arts London	University of Texas Austin
University of New South Wales	Uppsala University	University of the West of England	University of Tulsa
University of Sydney	Utrecht University	University of West London	University of Washington
	Vienna University of Technology	University of Westminster	University of Wisconsin, Madison
	Warsaw University of Technology		Virginia Tech
			Wellesley College
			Wheaton College